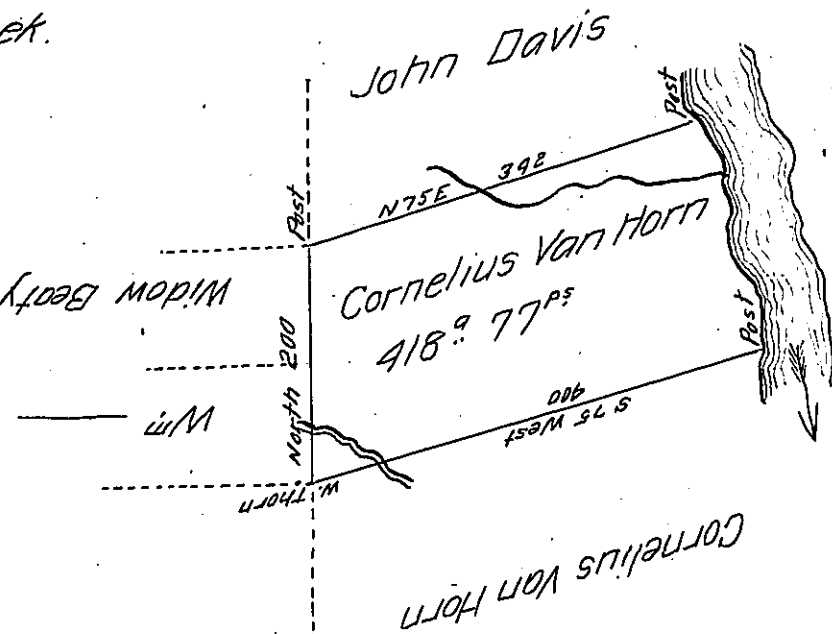


FORM No. 1.

Courses & Distances  
down French Creek.

S 22 E 100  
S 8 E 38  
S 18 E 50

188 perches



In Pursuance of a Warrant for 400<sup>ac</sup> of land granted to Cornelius Van Horn dated the 31<sup>st</sup> day of May 1808. Surveyed on the 27<sup>th</sup> day of Oct: 1808, the above described tract of land containing 418 acres 77 Perches and the allowance &c. Situate in Mead Township on the West Side of French Creek in the County of Crawford - Originally Surveyed to Robert Fitz Randolph and Resurveyed on an order of the Board of Property the 26<sup>th</sup> day of November 1808 for Cornelius Van Horn.

To Samuel Cochran Esq<sup>r</sup>  
Surveyor General of Penn<sup>a</sup>

James Miller D.S.

IN TESTIMONY that the above is a copy of the original remaining on file in the Department of Internal Affairs of Pennsylvania, made conformably to an Act of Assembly approved the 16th day of February 1833, I have hereunto set my hand and caused the Seal of said Department to be affixed at Harrisburg, this seventh day of March 1907

*James Miller*  
Secretary of Internal Affairs.